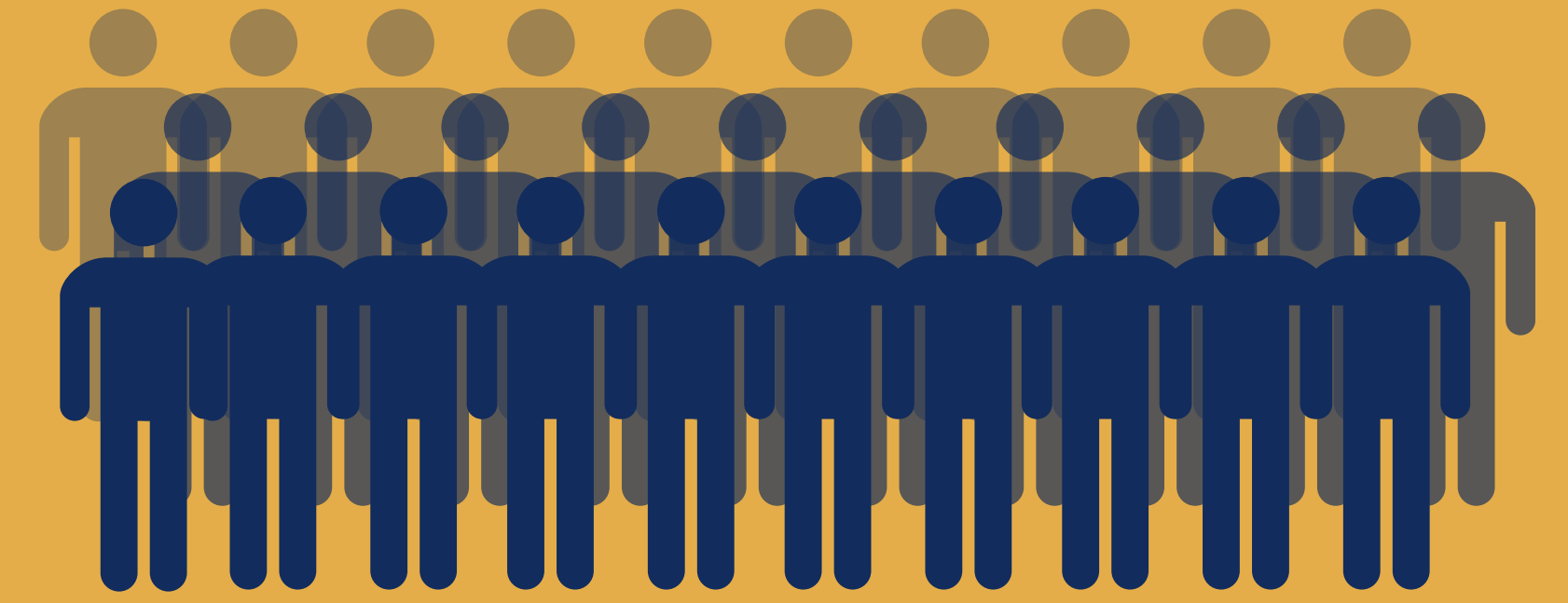


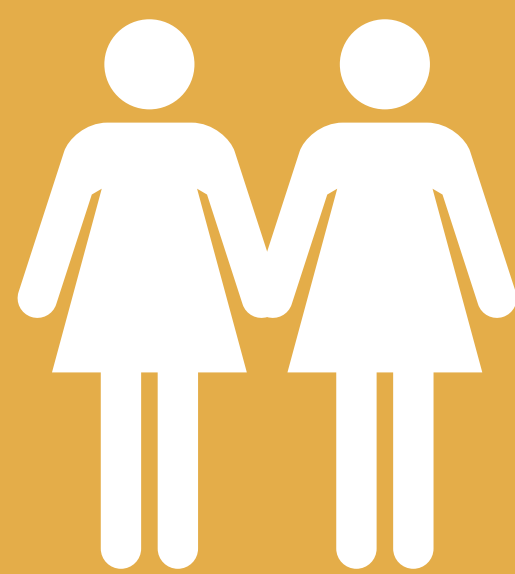
Domestic Abuse Facts



Between **4-6** women commit suicide **each week** due to DA



30 men **per year** are murdered by a current or former partner



At least 2 women **per week** are murdered by a current or former partner

Therefore, at least 6 women die each week because of DA. The figures for those killed rose by 32 in 2018 to 173.

Domestic Abuse Facts

On average there are **35** incidents of Domestic Abuse before a call is made to the police

So... the first Operation Encompass notification you receive for a child could indicate that they have experienced **34** incidents prior to this notification

Peak Times For Calls Relating to Domestic Abuse

A person with long, dark hair is shown from the chest up, sitting on a shaggy, light-colored rug. They have their hands pressed against their face, covering their eyes and nose, suggesting a state of distress or despair. The background is a plain, light-colored wall. The entire image is overlaid with a semi-transparent blue filter.

Monday to Friday

between 4.00pm and 10.00pm

Friday and Saturday

between 6.00pm and 1.00am

Sunday

between 5.00pm and 11.00pm

Domestic Abuse Facts

Action for Children asked local authorities what the 3 most common reasons were for children to be referred to social care.

- Domestic violence
- Other
- Neglect
- Physical abuse
- Mental health problems (parent)
- Substance misuse
- Sexual abuse or CSE
- Antisocial behaviour
- Don't know
- Disability
- Homelessness



Domestic Abuse Facts

Domestic Abuse by the parent remains the most common factor at the end of assessment for a child in need

In Every Class in Every School...



1 in 5 will experience Domestic Abuse



1 in 14 will be physically abused



1 in 10 will experience neglect



1 in 10 will experience 4 or more ACEs



1 in 20 sexually abused

86%

At 86%, Domestic Abuse is the highest predictor of 4 or more ACEs